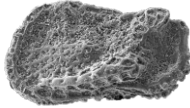


# SECOND CIRCULAR

# 10<sup>th</sup> INTERNATIONAL WORKSHOP

## Invitation



The organizing committee of 2024 NCSEE Workshop at the Geological Survey of Slovenia is pleased to invite you to the **10<sup>th</sup> International Workshop on the Neogene of Central and South-Eastern Europe** to be held on **May 27<sup>th</sup> to 31<sup>st</sup>, 2024 in Podčetrtek, Slovenia.**

## Contact

E-mail: [infoNCSEE@geo-zs.si](mailto:infoNCSEE@geo-zs.si)  
<https://www.geo-zs.si/ncsee>

## Conference Venue

The Workshop will be held at the **Terme Olimia**, Zdraviliška cesta 24, Podčetrtek, Slovenia.  
(Link: <https://www.terme-olimia.com/en>)

## Preliminary Programme

May 27	17:00 – 18:00	Registration
	18:00 – 19:00	Refreshments and a walk around Terme Olimia
May 28	9:00 – 10:30	Welcome ceremony and Keynote speakers
	10:30 – 17:00	Scientific Sessions
	19:00	Workshop Dinner
May 29	9:00 – 17:00	Workshop Excursion (Neogene sedimentary successions in the region)
May 30	9:00 – 10:00	Keynote speakers
	10:00 – 17:00	Scientific Sessions (oral and poster) and palaeontological workshops (presentation of Neogene ostracods, nannoplankton and macrofossils from SV Slovenia)
May 31	9:00 – 17:00	Post-Workshop Field Trip – optional

### Post Workshop Field Trip (50 EUR):

Tasting unique natural mineral waters from different natural springs

Geological educational trail in the surroundings of Podčetrtek, which will be held by guide from Kozjansko Park Public Institute. The trail highlights various geological structures and typical stratigraphical sequences characteristic of the Kozjansko area. Suitable footwear and clothing are required.

The organiser reserves the right to change the programme due to unforeseen circumstances.

## Important dates

December 15, 2023	Online registration opens Online abstract submission opens
February 15, 2024	Online abstract submission closes Early fee payment deadline
March 15, 2024	Late registration deadline
May 27 – 31, 2024	10 <sup>th</sup> NCSEE Workshop
May 31, 2024	Post-Workshop Field Excursion

## Presentations

All abstract submissions and presentations must be written in English. The title should reflect the content of the abstract. Include the names of all co-authors. The body of the abstract should contain a brief statement of the aims, methods, results and conclusions of your work and should not exceed 800 words including references. One figure is allowed.

Applicants must indicate whether they would prefer to give an oral or poster presentation. An oral presentation is preferred.

Only abstracts submitted between 15 December 2023 and 15 February 2024 by e-mail to [infoNCSEE@geo-zs.si](mailto:infoNCSEE@geo-zs.si) as a MS Word (.doc or .docx) attachment will be accepted.

Oral presentations should be prepared in Microsoft Power Point. Time for presentation is limited to 15 minutes, including 3 minutes for discussion.

Posters must be printed in **A1** format in portrait orientation. Authors are expected to introduce their posters during the poster sessions.

## Registration Fee

Before February 15, 2024	200 Eur
After February 15, 2024	250 Eur
PhD students	150 Eur
Accompanying Person	120 Eur
Bachelor and Master students	free

The workshop fee will include the digital abstract book, coffee breaks and lunch during the workshop, Workshop Dinner and Workshop Excursion with lunch.

Bachelor and Master students are very welcome to attend the conference free of charge.

## Payment

The payment details: **BANK OF SLOVENIA**  
 SLOVENSKA C.35  
 1505 LJUBLJANA  
**ACCOUNT No.:** 01100-6030346764  
**IBAN:** SI56011006030346764  
**SWIFT CODE:** BSLJS12X

## Accommodation

Hotel Breza**** overnight stay with breakfast:	double room	59 €
	single room	84 €
Hotel Sotelia****superior overnight stay with breakfast:	double room	80 €
	single room	126 €

A direct booking link will be available at the time registration opens. Participants will need to make their own reservations and payments.

## Transportation

Podčetrtek, a thermal-spa town in south-eastern Slovenia, can be reached by train from Ljubljana, Maribor, Zagreb etc. The railway station Podčetrtek Toplice is a 15-minute walk away from the Sotelia and Breza Hotels. Train connections and schedules are available here: [Slovenian railways - Passenger traffic \(sz.si\)](http://sz.si). The car ride from Ljubljana to Podčetrtek takes about 1 h and 40 min, from Zagreb it takes about 1 h 20 min. The closest airports to Podčetrtek are the Franjo Tuđman Airport Zagreb and the Ljubljana Jože Pučnik Airport.

## Scientific committee

Miloš Bartol (Geological Survey of Slovenia)  
 Stjepan Ćorić (GeoSphere Austria)  
 Valentina Hajek Tadesse (Croatian Geological Survey)  
 Katarína Holcová (Faculty of Science, Charles University)  
 Aleksander Horvat (Ivan Rakovec Institute of Palaeontology, ZRC SAZU)  
 Kristina Ivančič (Geological Survey of Slovenia)  
 Matija Križnar (Slovenian Museum of Natural History)  
 Marijan Kovačić (Faculty of Science, University of Zagreb)  
 Michal Kováč (Faculty of Natural Sciences, retired)  
 Oleg Mandić (Natural History Museum Vienna)  
 Miha Marinšek (Geological Survey of Slovenia)  
 Ljupko Rundić (Faculty of Mining and Geology, University of Belgrade)

## Organising Committee

Kristina Ivančič (Geological Survey of Slovenia)  
 Miloš Bartol (Geological Survey of Slovenia)  
 Miha Marinšek (Geological Survey of Slovenia)  
 Aleksander Horvat (ZRC SAZU Ivan Rakovec Institute of Palaeontology)  
 Urška Šolc (Geological Survey of Slovenia)  
 Staška Čertalič (Geological Survey of Slovenia)